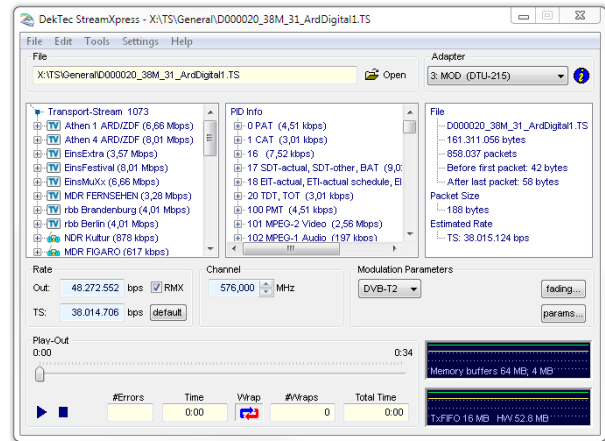


StreamXpress Stream Player Software

- Integrated (P)SI viewer, looping
- Control of modulation parameters
- Remote control option

FEATURES

- Build yourself a low-cost, versatile stream player using a standard- or industrial PC, a DekTec output adapter and **StreamXpress** playout software
- Streams DTV signals from file: baseband (ASI, SDI), modulated (RF) or TS-over-IP
- Integrated (P)SI viewer
- Integrated test-signal generator
- Advanced support for several modulation standards, including DAB+, DVB-S2X, DVB-T2 and ISDB-S/T
- Play-out at a higher rate by null-packet stuffing with PCR correction
- Endless play with optional automatic correction of continuity-counter and PCR/PTS/DTS fields
- Automatic computation of transport rate
- Reproducible injection of errors in the transport stream with adjustable error rate



APPLICATIONS

- Universal test- stream generator for feeding set-top boxes, digital TVs, digital-video processing equipment, etc.
- Demos at trade shows, in stores, etc.
- Test-signal generator for ATE environments

SUPPORTED SIGNAL TYPES

Signal Type	Adapters
DVB-ASI	DTA-100, 105, 112, 115, 140, 145, 160, 2136, 2137C, 2142, 2144, 2145, 2152, 2154, 2160, 2174 DTE-3100; DTU-205, 245
SD-SDI	DTA-145, 2144, 2145, 2152, 2154, 2160, 2174
HD-SDI	DTA-2152, 2154, 2174
3G-SDI	DTA-2174
DVB-SPI	DTA-102, 2142
Modulators	DTA-107, 110, 111, 112, 115, 116, 117, 2107, 2111, 2115 DTU-215, 315
TS-over-IP	DTA-160, 2160, 2162
I/Q Samples	DTA-115, 116, 117, 2107, 2111, 2115; DTU-215, 315

PC REQUIREMENTS

Platform	Win XP, Vista, 2k3/2k8, 7/8/10
Processor*	Core i3 or better Core i7 or better (modulation)

* Or equivalent AMD processor

ORDERING INFORMATION

Type	Description
DTC-300	StreamXpress player software
DTC-302-RC	SOAP-based remote control option for StreamXpress
DTC-305-CM	Channel-simulation option
DTA-xxx-SP DTU-xxx-SP	(SP option) Bundle of DekTec adapter and StreamXpress

Please refer to www.dektec.com for the latest pricing and a list of distributors and resellers.