

Cable Management
Catalogue



PROTELFiBER



Contents



fiber optic splice closure

OPJ Series Horizontal FOSC

OPJ(04)-1	1
OPJ(04)-2	3
OPJ(04)-3	5
OPJ(04)-5	7
OPJ(04)-6	9
OPJ(04)-7	11
OPJT-JF/K	13
OPJT-JF/M	15
OPJT-JF/48	17

OPJM Series vertical (dome)FOSC

OPJM3-JF	19
OPJM3-RS	21
OPJM5-RS	23

fiber optic terminal box

wall-mounted series fiber optic terminal box

OPZ/48A	25
OPZ/WL	28
OPZ/S	30
OPZ/K	32
OP (05) distribution box	34

rack-mounted series fiber optic terminal box

OPZ/JJ	38
OPZ/JJ-JCL	40
OPZ/JJ-CL	42
OPZ/JJ-FCZ	44

optic fiber distribution system

Optical fiber distribution frame

OPX-(04)A	46
OPX-(04)B	48
19" standard cabinet	51
Fiber Interconnect Cabinet	53

fiber optic passive devices 55

accessories 61

OPJ Series Horizontal FOSC

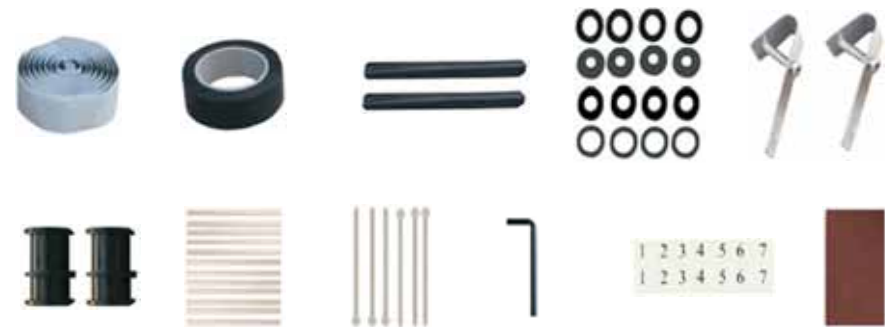


OPJ(04)7 Horizontal Fiber Optical Splice Closure

introduction

OPJ(04)7 provide with 8 fiber cable in-out round ports and the cable diameter is from $\Phi 10$ - $\Phi 22$. It can be used in aerial, duct and direct buried application. This product is made from the high-quality and with the mechanical sealing structure filled with the sealing material. The external component and fastening piece are all made from the high-quality stainless steel. It can be opened after sealing

(Available for duct, Aerial, Direct buried)



Item	OPJ(04)7
Dimension (mm)	435 x 190 x 170
Weight (Kg)	4.7
Cable diameter (mm)	$\Phi 10$ - $\Phi 22$
cable entry ports	four cable entry port on each end
Max Capacity of Fiber Splice	24 (single)
Max Capacity of Splice Tray	12
Max Capacity	288 (single)
sealing structure	sticky cinchure

Kit contents

Description	Type	Quantity
splice protector tube		According to the fiber cores
sticky cinchure	widen	2pcs
sticky cinchure	narrow	4pcs
insulated robber belt		2pcs
cables ties		4 x splice tray
sealing washer		8 sets
block		4 piece
marking note		4 x fiber cores
hanging hook	Aerial-hanger	1 pair
allen wrench	M5	1 purchase

Pack information

(mm) Inner carton dimension	(kg) Inner carton weight	(mm) Outside carton dimension	(kg) Outside carton weight	(pcs) No of units per carton
496*196*180	4.7	515*425*575	30	6

OPJ Series Horizontal FOSC



OPJT-JF/K Horizontal Fiber Optical Splice Closure

introduction

OPJT-JF/K provide with 6 fiber cable in-out round ports and the cable diameter is from $\Phi 10-\Phi 28$. It can be used in aerial, duct application. This product is made from the high-quality and with the mechanical sealing structure filled with the sealing material. The external component and fastening piece are all made from the high-quality stainless steel. It can be opened after sealing, without changing the sealing material.

(Available for duct, Aerial)

Item	OPJT-JF/K
Dimension (MM)	690*185*140
Weight (Kg)	4.7
Cable diameter (MM)	$\phi 7-\phi 28$
Cable entry ports	six
Max Capacity of Fiber Splice	16(single)/21 (single)/48 (ribbon)
Max Capacity of Splice Tray	6
Max Capacity	96(,16single,16fibers/tray); 126(,21 single,21fibers/tray) 288 (, 48ribbon)
Structure of cable entry port sealing structure	Silicon gum material



Kit contents

Description	Type	Quantity
Splice protector tube		According to the fiber cores
marking note		1(piece)
abrasive cloth		1(piece)
special wrench		2(piece)
sticky cinchure		1(coil)
Sticky cinchure		1(coil)
Plug		1(set)
Locking nut		6 (piece)
Cable entry seal components		6 (piece)
plasic hoop		1(set)
hang hook		2(pcs)
Cables ties		4 splice tray

Pack information

(mm) Inner carton dimension	(kg) Inner carton weight	(mm) Outside carton dimension	(kg) Outside carton weight	(pcs) No of units per carton
710*295*215	4.7	730*620*460	20	4

OPJ Series Horizontal FOSC



OPJT-JF/M Horizontal Fiber Optical Splice Closure

introduction

OPJT-JF/M provide with 6 fiber cable in-out round ports and the cable diameter is from $\Phi 10-\Phi 28$. It can be used in aerial, duct and underground application. This product is made from the high-quality and with the mechanical sealing structure filled with the sealing material. The external component and fastening piece are all made from the high-quality stainless steel. It can be opened after sealing, without changing the sealing material.

(Available for duct, Aerial, Direct buried)

Item	OPJT-JF/M
Dimension (MM)	610*185*140
Weight (Kg)	4.7
Cable diameter (MM)	$\phi 7-\phi 28$
Cable entry ports	six
Max Capacity of Fiber Splice	16(single)/21 (single)/48 (ribbon)
Max Capacity of Splice Tray	6

Item	OPJT-JF/M
Max Capacity	147(,21single,21fibers/tray)96(,16 Single,16fibers/tray)288 (, 48ribbon)
Structure of cable entry port sealing structure	Silicon gum material



Kit contents

Description	Type	Quantity
Splice protector tube	FPS-01	According to the fiber cores
marking note		1(piece)
abrasive cloth		1(piece)
special wrench		2(piece)
sticky cincture		1(coil)
Sticky cincture		1(coil)
Plug		1(set)
Locking nut		6 (piece)
Sealing washer		4sets
plasic hoop		1(set)
hang hook		2(pcs)
cables ties		4 splice tray

Pack information

(mm) Inner carton dimension	(kg) Inner carton weight	(mm) Outside carton dimension	(kg) Outside carton weight	(pcs) No of units per carton
630*295*215	4.7	670*620*460	20	4

OPJ Series Horizontal FOSC



OPJT-JF/K48 Horizontal Fiber Optical Splice Closure

introduction

OPJT-JF/K48 provide with 4 fiber cable in-out round ports and the cable diameter is from $\Phi 10-\Phi 17$. It can be used in aerial, duct application. This product is made from the high-quality and with the mechanical sealing structure filled with the sealing material. The external component and fastening piece are all made from the high-quality stainless steel. It can be opened after sealing, without changing the sealing material.

Available for the aerial and duct installation

Item	OPJT-JF/K48
Dimension (mm)	430 x ϕ 190
Weight (Kg)	1.7
Cable diameter (mm)	ϕ 10- ϕ 17
Cable entry ports	Two cable entry port on each end
Max Capacity of Fiber Splice	12(single)

Item	OPJT-JF/K48
Max Capacity of Splice Tray	4
Max Capacity	48(single)
Sealing structure	



Kit contents

Description	Type	Quantity
splice protector tube	FPS-01	According to the fiber cores
marking note		1 (piece)
abrasive cloth		1 (piece)
special wrench		1 (piece)
sticky cinchure		1 (coil)
insulated robber belt		1 (coil)
hang hook		1 pair
nylon tie	aerial	4 splice tray
hook		1 piece

Pack information

(mm) Inner carton dimension	(kg) Inner carton weight	(mm) Outside carton dimension	(kg) Outside carton weight	(pcs) No of units per carton
450*200*190	1.7	480*430*600	11	6

OPJM Series vertical (dome)FOSC



Dome Mechanical Seal Fiber Optic Splice Closure (FOSC)

introduction

OPJ-JF-M3 provide with four cable in-out ports, it can be used in aerial and underground application. it is made from quality engineering plastic. the cover and base are filled with silicon rubber and sealed with hoop. the entry ports are sealed with thread parts. it can be opened after sealing and can be reused without changing sealing material.

(Available for underground, aerial)

Item	OPJM3-JF
Dimension (MM)	φ 190 x 410
Weight (Kg)	2.34
Cable diameter (MM)	φ 7 - φ 22
Cable entry ports	four
Max Capacity of Fiber Splice	24 (single)/

Item	OPJM3-JF
Max Capacity of Splice Tray	4
Max Capacity	96(single)
Structure of cable entry port	thread mechanical sealing
sealing structure	silicon gum material



Kit contents

Description	Type	Quantity
Splice protector tube		According to the fiber cores
marking note		1(piece)
abrasive cloth		1(piece)
special wrench		1(piece)
sticky cincture		1(coil)
insulated robber belt		1(coil)
earthing wire		1(stick)
fiber buffer tube		
metal hoop		1(set)
plastic hoop		1(set)
sealing ring		1(big) 4(small)
fiber protector tube		According to th splice tray
Cables ties		4 x splice tray

Pack information

(mm)	(kg)	(mm)	(kg)	(pcs)
Inner carton dimension	Inner carton weight	Outside carton dimension	Outside carton weight	No of units per carton
420*170*205	2.34	550*445*445	15	6

OPJM Series vertical (dome)FOSC



Dome Heat Shrinkable Seal Fiber Optic Splice Closure

introduction

OPJ-RS-M3 provide with four fiber cable in-out ports(3 round ports, 1 elliptical port),it can be used in aerial and underground application,it is made from quality engineering plastic,the cover and the base are filled with silicon rubber and sealed with hoop.then entry ports are sealed with thread parts.it can be opened after sealing and can be reused without changing sealing material.

(Available for Aerial, underground)

Item	OPJ-RS-M3
Dimension (MM)	φ 190 × 435
Weight (Kg)	
Cable diameter (MM)	φ 7 – φ 22
Cable entry ports	four
Max Capacity of Fiber Splice	12(single)/24 (single)
Max Capacity of Splice Tray	4
Max Capacity	48(, 12, single 12fibers/tray) 96(24 single 24 fibers/tray)
Structure of cable entry port sealing structure	heat-shrinkable sealing structure silicon gum material



Kit contents

Description	Type	Quantity
Splice protector tube		According to the fiber cores
fiber protector tube		According to the splice tray
marking note		1(piece)
abrasive cloth		1(piece)
Cables ties		4 × splice tray
metal hoop		1(set)
plastic hoop		1(set)
branching card		1piece
heat-shrinkable tube	φ 32 × 150	3PCS
heat-shrinkable tube	φ 63 × 150	1piece

Pack information

(mm)	(kg)	(mm)	(kg)	(pcs)
Inner carton dimension	Inner carton weight	Outside carton dimension	Outside carton weight	No of units per carton
445*170*205	2.25	550*470*445	15	6

OPJM Series vertical (dome)FOSC



Dome Heat Shrinkable Seal Fiber Optic Splice Closure

introduction

OPJ-RS-M5 provide with six fiber cable in-out ports(4 round ports and 1 elliptical port),it can be used in aerial and underground application,it is made from quality engineering plastic,the cover and the base are filled with silicon rubber and sealed with hoop,the entry port are sealed with heat shrinkable tube,it can be opened after sealing and can be reused without changing sealing material.

(Available for aerial and underground)

Item	OPJ-RS-M5
Dimension (MM)	φ 210 × 540
Weight (Kg)	
Cable diameter (MM)	φ 7 - φ 22
Cable entry ports	six
Max Capacity of Fiber Splice	24(single)/72 (ribbon)
Max Capacity of Splice Tray	4
Max Capacity	96(single) 288(ribbon)
Structure of cable entry port	Heat-shrinkable sealing structure
sealing structure	Silicon gum material

Kit contents



Description	Type	Quantity
Splice protector tube		According to the fiber cores
Fiber protector tube		According to the splice tray
marking note		1(piece)
abrasive cloth		1(piece)
Cables ties		4 × splice tray
Fixture for fixing on the pole		1set(2 pcs)
adjustable retainer for fixing on the pole		1set(1big 1small)
plastic hoop		1(set)
branching card		1(piece)
earthing wire		1(stick)
heat-shrinkable tube	φ 32 × 200	4(PCS)
Heat-shrinkable tube	φ 70 × 250	1(piece)

Pack information

(mm)	(kg)	(mm)	(kg)	(pcs)
Inner carton dimension	Inner carton weight	Outside carton dimension	Outside carton weight	No of units per carton
580*245*205	3.5	510*415*610	15.6	4

wall-mounted series fiber optic terminal box

OPZ/48A series optical fiber terminal box

Adaptor outlet



OPZ/48A-FC12



OPZ/48A-SC12



OPZ/48A-ST12



OPZ/48A-FC24



Fiber pigtail outlet



OPZ/48A-48



OPZ/48A-CQ48



OPZ/48A-24



wall-mounted series fiber optic terminal box



OPZ/G-24A



Introduction

OPZ/48A serial optical fiber terminal box can be applied in the straight through or branch connection of indoor optical cable, available for the distribution and terminal connection of various kinds of optical fiber system. Fit for wall mounting

Order guide

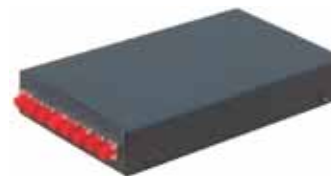
Type	(mm) Dimension	Max Capacity (cores)	Remark
OPZ/48A-FC12	330*183*70	12	The body is made from cold rolled steel sheet, the surface use the technique of electrostatic spraying, 12 outlets for adaptors, available for FC,ST, SC adaptors.
OPZ/48A-SC12	330*183*70	12	
OPZ/48A-ST12	330*183*70	12	
OPZ/48A-FC24	330*183*100	24	The body is made from cold rolled steel sheet, the surface use the technique of electrostatic spraying, fiber pigtail outlet
OPZ/48A-CQ48	330*183*70	48	
OPZ/G-24A	300*120*46	24	

Pack information

Model	(Mm) Inner carton dimension	(Kg) Inner carton weight	(Mm) Outer carton dimension	(Kg) Outer carton weight	(Pcs) No of units per carton
OPZ/48A	360*193*85	1.85	430*370*470	20	10
OPZ/48A-FC24	360*193*115	2.05	430*370*470	17.0	8
OPZ/G	320*150*60	1.05	630*330*340	20.7	20

OPZ/WL series optical fiber terminal box

Adaptor outlet



OPZ/WL-FC8



OPZ/WL-SC8



OPZ/WL-ST8



wall-mounted series fiber optic terminal box

Fiber pigtail outlet



OPZ/WL-CQ8



Introduction

OPZ/WL Serial Fiber Terminal Box can be applied in the straight through and branch connection of indoor optical cables, available for the distribution and terminal connection of various optical fiber system ,fit for wall mounting,especially for mini-network terminal distribution.

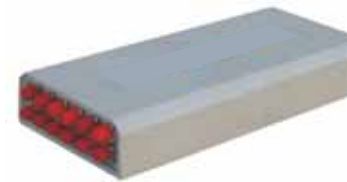
Order guide

Type	(mm) Dimension	Max Capacity (cores)	Remark
OPZ/WL-FC8	260*140*40	8	The body is made from cold rolled steel sheet, and the surface use the technique of electrostatic spraying,8 outlets for adaptors, Available for FC,SC,ST
OPZ/WL-SC8	260*140*40	8	
OPZ/WL-ST8	260*140*40	8	
OPZ/WL-CQ8	260*120*40	8	The body is made from cold rolled steel sheet, and the surface use the technique of electrostatic spraying,8 outlets for fiber pigtail

Pack information

Model	(Mm) Inner carton dimension	(Kg) Inner carton weight	(Mm) Outer carton dimension	(Kg) Outer carton weight	(Pcs) No of units per carton
OPZ/WL	320*150*60	1.05	630*330*340	21	20
OPZ/WL-CQ	320*150*60	1	630*330*340	21	20

OPZ/S series optical fiber terminal box



OPZ/S-FC8



OPZ/S-SC8



OPZ/S-ST8



wall-mounted series fiber optic terminal box

Introduction

OPZ/S Serial Fiber Terminal Box can be applied in the straight through or branch connection of indoor optical cable, available for distribution and terminal connection of various optical fiber system ,fit for wall mounting and desk mounting for its less weight.

Order guide

Type	(mm) Dimension	Max Capacity (cores)	Remark
OPZ/S-FC8	285*125*50	8	The case body is made from high intensity anti-aging plastic,8 outlets for adaptors, available for FC、SC、ST
OPZ/S-SC8	285*125*50	8	
OPZ/S-ST8	285*125*50	8	

Pack information

Model	(Kg) Inner carton weight	(Mm) Outer carton dimension	(Kg) Outer carton weight	(Pcs) No of units per carton
320*150*60	0.55	630*330*340	12.5	20

Adaptor outlet

OPZ/K series optical fiber terminal box



OPZ/K-FC12



OPZ/K-SC12



OPZ/K-ST12



wall-mounted series fiber optic terminal box

Fiber pigtail outlet



Introduction

OPZ/K Serial Fiber Terminal Box can be applied in the straight through and branch connection of indoor optical cables, available for the distribution and terminal connection of various optical fiber system ,fit for wall mounting,inserting structure of cover and panel make it more convenient and flexible.

Order guide

Type	(mm) Dimension	Max Capacity (cores)	Remark
OPZ/K-FC12	315*140*60	12	The body is made from cold rolled steel sheet, and the surface use the technique of electrostatic spraying,12 outlets for adaptors, Available for FC,SC,ST
OPZ/K-SC12	315*140*60	8	
OPZ/K-ST12	315*140*60	12	
OPZ/K-CQ12	315*140*60	12	The body is made from cold rolled steel sheet, and the surface use the technique of electrostatic spraying,8 outlets for fiber pigtail

Pack information

Model	(Mm) Inner carton dimension	(Kg) Inner carton weight	(Mm) Outer carton dimension	(Kg) Outer carton weight	(Pcs) No of units per carton
OPZ/K	330*150*70	1.4	480*360*380	22	15
OPZ/K-CQ	330*150*70	1.4	480*360*380	22	15

OP(05) series optical fiber distribution cabinet



OP (05) A-24



OP (05) B-48



OP (05) A-24A



wall-mounted series fiber optic terminal box



OP (05) C



OP (05) C-FC12



OP (05) C-SC12



OP (05) D



OP (05) D-FC24



OP (05) D-SC24

Introduction

Available for small capacity communication system, wall mounting, reasonable and compact structure, harmonized with machine room.

The cabinet is composed of two parts, one links with optical cables for fusion connection between optical cable and fiber pigtail and another links with patch cord.

Provide fusion and storage appliance for optical cables.

Reliable protection appliance of fixing, stripping and earthing for optical cables.

Whole range protected design for fiber lay to ensure the bending radius =40mm

Provide various accessories to avoid any unexpected damage to the fiber

Order guide

Type	(mm) Dimension	Max Capacity (cores)	Remark
OP (05) A-24	455*405*80	24	The case body is made of cold rolled steel sheet, electrostatic spraying, outdoor wall mouting, provide 24-72 adaptors, available for FC\SC\STLC
OP (05) A-48	455*405*120	48	
OP (05) A-72	455*405*150	72	
OP (05) B-48	455*405*120	48	The case body is made of stainless steel, electrostatic spraying, outdoor wall mouting, provide 48-72 adaptors, available for FC\SC\STLC
OP (05) B-72	455*405*150	72	
OP (05) A-24A	350*350*80	24	The case body is made of cold rolled steel sheet, electrostatic spraying, outdoor wall mouting, provide 12-24 adaptors, available for FC\SC\STLC
OP (05) C-FC12	350*300*80	12	
OP (05) C-SC12		24	
OP (05) D-FC24			
OP (05) D-SC24			

wall-mounted series fiber optic terminal box

Pack information

Model	(Mm) Inner carton dimension	(Kg) Inner carton weight	(Mm) Outer carton dimension	(Kg) Outer carton weight	(Pcs) No of units per carton
OP (05) A-24	480*430*110	7	500*450*490	29	4
OP (05) A-48	480*430*150	8		25	3
OP (05) A-72	480*430*180	9	500*450*390	19	2
OP (05) B-48	480*430*150	8.5	500*450*490	26.5	3
OP (05) B-72	480*430*180	9.5	500*450*390	20	2
OP (05) A-24A	385*385*115	3.85	405*405*605	20.5	4
OP (05) C-FC12	385*335*115	3.6	405*355*605	19	
OP (05) C-SC12					
OP (05) D-FC24					
OP (05) D-SC24					

OPZ/JJ series rack mounted fiber terminal box



OPZ/JJ-SC24



OPZ/JJ-FC24



OPZ/JJ-FC12



OPZ/JJ-ST24

Rack-Mounted Series Fiber Optic Terminal Box



OPZ/JJ-FC48

OPZ/JJ-SC48

Introduction

OPZ/JJ-JCL serial fiber terminal box can be applied in the branch connection of fiber termination, work as distribution box , 19" standard structure, rack mounting ,available for the installation of FC,SC,ST,LC adaptors.

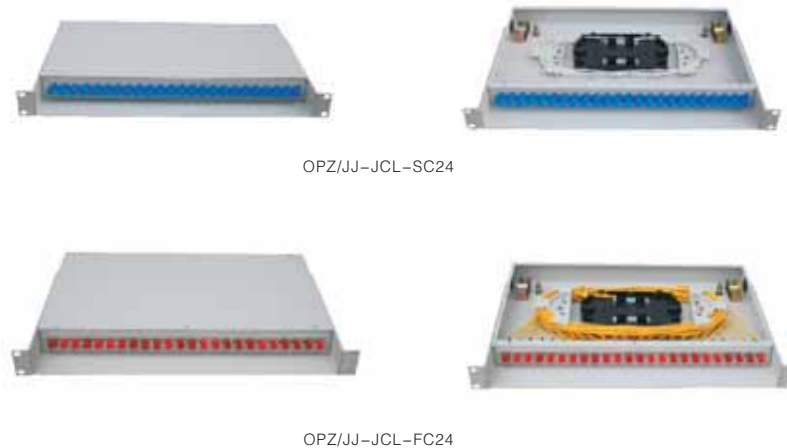
Order guide

Type	(mm) Dimension	Max Capacity (cores)	Remark
OPZ/JJ-SC12	480×250×1U	12	The body is made from cold rolled steel sheet, electrostatic spraying, we can install adaptors for you,Available for the installation of FC,SC, ST,LC adaptors.
OPZ/JJ-SC24	480×250×1U	24	
OPZ/JJ-SC48	480×250×2U	48	
OPZ/JJ-FC12	480×250×1U	12	
OPZ/JJ-FC24	480×250×1U	24	
OPZ/JJ-FC48	480×250×2U	48	
OPZ/JJ-ST12	480×250×1U	24	
OPZ/JJ-ST24	480×250×1U	24	

Pack information

Model	(Mm) Inner carton dimension	(Kg) Inner carton weight	(Mm) Outer carton dimension	(Kg) Outer carton weight	(Pcs) No of units per carton
OPZ/JJ-SC12	465*285*75	2.6	485*425*305	14.2	5
OPZ/JJ-SC24					
OPZ/JJ-SC48	465*285*125	3.8	650*485*305	21	
OPZ/JJ-FC12	465*285*75	2.6	485*425*305	14.2	
OPZ/JJ-FC24					
OPZ/JJ-FC48	465*285*125	3.8	650*485*305	21	
OPZ/JJ-ST12	465*285*75	2.6	485*425*305	14.2	
OPZ/JJ-ST24					

OPZ/JJ-JCL series dummy drawer optical fiber terminal box



OPZ/JJ-JCL-SC24

OPZ/JJ-JCL-FC24

Rack-Mounted Series Fiber Optic Terminal Box



OPZ/JJ-JCL-2SC12



OPZ/JJ-JCL-2SC24

Introduction

OPZ/JJ-JCL Serial dummy drawer optical Fiber Terminal Box can be applied in the branch connection of terminal optical fiber cables, 19" standard structure, rack mounting, available for the adaptors installation such as FC, SC, ST, LC. artistic appearance, easy for pasting signs.

Order guide

Type	Type	(mm) Dimension	Max Capacity (cores)	Remark
OPZ/JJ-JCL	OPZ/JJ-JCL-SC24	430 × 300 × 1U	24	The case body is made from cold rolled steel sheet, we can install adaptors for you, Available for adaptors installation such as FC, SC, ST, LC
	OPZ/JJ-JCL-FC24	430 × 300 × 1U	24	
	OPZ/JJ-JCL-2SC12	430 × 300 × 1U	24	
	OPZ/JJ-JCL-2SC24	430 × 300 × 1U	48	

Pack information

Model	(Mm) Inner carton dimension	(Kg) Inner carton weight	(Mm) Outer carton dimension	(Kg) Outer carton weight	(Pcs) No of units per carton
OPZ/JJ-JCL	465*330*75	3.3	485*400*350	18	5

OPZ/JJ-CL series drawer type optical fiber terminal box



OPZ/JJ-CL-SC12



OPZ/JJ-CL-FC24



OPZ/JJ-CL-2SC24



OPZ/JJ-CL-FC48



Rack-Mounted Series Fiber Optic Terminal Box

Introduction

OPZ/JJ-CL Serial drawer type Fiber Terminal Box can be applied in the branch connection of optical cable termination, 19" standard structure, rack mounting, available for the installation of FC, SC, ST, LC adaptors.drawer structure,easy for operation.

Order guide

Type	(mm) Dimension	Max Capacity (cores)	Remark
OPZ/JJ-CL-SC12	430 × 300 × 1U	12	The case body is made from cold rolled steel sheet, and the surface use the technology of electrostatic spraying, we can install adaptors for you,Available for the installation of FC,SC,ST,LC adaptors
OPZ/JJ-CL-FC24		24	
OPZ/JJ-CL-2SC24		48	
OPZ/JJ-CL-FC48	430 × 300 × 2U	48	

Pack information

Model	(Mm) Inner carton dimension	(Kg) Inner carton weight	(Mm) Outer carton dimension	(Kg) Outer carton weight	(Pcs) No of units per carton
OPZ/JJ-CL-SC12	465*330*75	5.5	485*400*350	28.5	5
OPZ/JJ-CL-FC24					
OPZ/JJ-CL-2SC24					
OPZ/JJ-CL-FC48	475*335*130	6.2	500*350*550	26	4

OPZ/JJ-FCZ series dustproof cover optical fiber terminal box



OPZ/JJ-FCZ/2SC24

Introduction

OPZ/JJ-FCZ serial optical fiber terminal box can be used for the branch connection of optical cable termination, 19" standard structure Available for the rack installation of adaptors for FC、SC、ST、LC and so on,dustproof and easy for operation.

(Dimension): 430 × 300 × 1U

(Material): cold rolled steel sheet

(Capacity): single core 24 double core 48

(Weight): 3.9Kg

Rack-Mounted Series Fiber Optic Terminal Box



OPZ/JJ-FCZ/X-2SC12

Introduction

OPZ/JJ-FCZ/X serial dustproof cover optical fiber terminal box can be applied in the storage of indoor optical cable, distribution and terminal connection of various optical fiber system. Available for the rack installation of adaptors for FC, SC, ST, LC and so on. revolving structure, easy for operation.

(Dimension): 430×300×1U

(Material): cold rolled steel sheet

(Core): 1U24□ 2U48□ 3U72□ 4U96□

(Weight): 4.5Kg

Pack information

Model	(Mm) Inner carton dimension	(Kg) Inner carton weight	(Mm) Outer carton dimension	(Kg) Outer carton weight	(Pcs) No of units per carton
OPZ/JJ-FCZ/2SC24	465*330*75	4.1	485*400*350	21.5	5
OPZ/JJ-FCZ/X/2SC12		4.65		24.2	

Optical fiber distribution frame

OPX-(04)-A



Application:

1. Connecting distribution network and equipment cable
2. Connecting with indoor Cable termination equipments

Features:

1. 19" standard cabinet, large capacity, high intensity. Modular structure, easy to cable splicing, distribution and storage
2. Top, bottom and rear openings for cable entry covered with removable blank panels
3. Accomplishing scientific arrangement for patch cords with Fiber Storage Units
4. Suitable for inserting installation of SC, FC and ST adaptor

Optical fiber distribution frame

Model	(mm) Size (height*width*depth)	N.W	G.w
OPX-(04)-A	2000*800*450		

ODF unit series



Order guide

Model	(Mm) Net size	(Mm) Inner carton dimension	(Kg) Inner carton weight	(Mm) Outer carton dimension	(Kg) Outer carton weight	(Pcs) No of units per carton
GB-C-12	480*250*1U	465*285*75	3.1	485*425*305	16.2	5
GB-A-48	480*210*3U	450*255*145	6	530*480*340	25.6	4
GB-A-72	480*210*4U	455*255*195	7.7	545*475*425	32.5	

Optical fiber distribution frame

OPX-(04)-B



It can be used in the termination and distribution of partial trunk optical cable in optical cable communication system, easy to realize connection, distribution and adjustment, it is distribution and connection equipment.

Electrolysis plate frame, electrostatic spraying in whole
Adopt faced cable entry, whole faced operation

Safe and flexible, mounting against wall or back-to-back

Modular structure, easy to adjust fusion and distribution units

Available for zonary and non-zonary cables.

Suitable for inserting installation of SC,FC and ST adaptor

Adaptor and module are 30° in observe, which ensure the bend radius of patch cord and avoid laser burning eyes.

Reliable stripping, protection, fixing and earth devices

Ensure fiber and cable bend radius is bigger than 40mm everywhere.

Accomplishing scientific arrangement for patch cords with Fiber Storage Units.

According to simple adjustment among the units, cable can lead in from top or bottom, and with clear mark for fiber distribution

Optical fiber distribution frame

Model	(mm) Size (height*width*depth)	N.W	G.w
2000*800*450	2050*850*500		
2200*800*450	2200*850*500		

ODF unit series



Order guide

Model	(Mm) Net size	(Mm) Inner carton dimension	(Kg) Inner carton weight	(Mm) Outer carton dimension	(Kg) Outer carton weight	(Pcs) No of units per carton
GB-B-24	480*300*2U	475*335*130	5.7	500*350*550	24	4
GB-B-48	480*300*3U	475*335*170	7.7	500*350*540	24	3
GB-B-72	480*300*4U	470*335*220	9.8	500*350*460	21.1	2
GB-B-96	480*300*6U	470*335*290	13.7	500*350*460	28.9	2

Welding & distribution module in integration

(Material) : ABS
 (Weight) : 0.5kg
 (Dimension) : 340*200*25mm



Plastic structure, legerity with perfect appearance, easy for installation of inlay, convenient to expand capacity, obliquity of adapter is 30° which ensure the bend radius of patch cord and avoid laser burning eyes. Kinds of splicing and distribution mark, easy to make fusion and distribution record.

19" Standard Cabinet

OPG-(04) series 19" standard cabinet



OPG-(04)/A-1800



OPG-(04)/B-1800



OPG-(04)/B-1000

Introduction

- 1、 standard 19" structure designed, common used all over the world.
- 2、 steady welded structure, The firm out shell can ensure trouble free service under any circumstance.
- 3、 Front door with large view scale, easy for observing instruments.
- 4、 Electrostatic spraying with artistic appearance.
- 5、 The whole cabinet has been treated with phosphate and anti-corrosive painting
- 6、 Dimension can be changed according to any request.

Application

Widely applied in the computer network project, building wiring, telecommunication, intelligent building, school and so on.

Specification

(number)	(height) mm	(width) mm	(depth) mm
42	2000	600	600
37	1800	600	600
32	1600	600	600
24	1200	600	600
20	1000	600	600
14	700	600	600
7	400	600	600

Fiber Interconnect Cabinet

OPXF—(04)A Fiber Interconnect Cabinet



OPXF—(04)A fiber interconnect cabinet can be applied in active link with trunk optical cables and cable distribution, accomplish fusion,storage,distribution and dispatch for the cables.

feature

Standard case body, made of high intensity,anti-corrosive,anti-aging special composite material,adapting various bad weather condition, with reliable sealing, water-proof and dampproof.

Splicing & distribution integration module with adaptor assembling, fusion and connection ,storage in integration, inserted assembling and available for different type of adaptors such as FC,SC,ST,

Adaptors assembling with deflexion of 30° to ensure fiber pigtail bending radius, with perfect control winding ring of the fiber in horizontal and vertical.it make the fiber distribution tidiness and be protected in security The bottom end is assembled with spare splice tray, for the direct fusion and connection of trunk optical cables and distribution cables.

Every side of the cabinet can bear the vertical pressure of 980N, and 200N for the outer edge over the door when door opened.

Order guide

Model	(Mm)dimension Width*height*depth	Max capacity(core)
OPXF – (04)A	750 × 1450 × 360	288
OPXF – (04)B	480 × 300 × 950	144
OPXF – (04)C	750 × 1450 × 620	576

Fiber Optic Passive Devices

Optical fiber connector(patch cord)



FC/APC - FC/APC



SC/PC - SC/PC



ST/PC - ST/PC



LC/PC - LC/PC



E2000



MTRJ

description

Optical fiber active connector is a plug-in device for fibers connecting

application

Optical fiber communication network, data transmission, test instruments, LAN, Cable CATV.

classification

Optical fiber connector can be divided into silicon based optical fiber singlemode connector and multimode connector, and other fiber connector with plastic as transmission medium.

according to the constructure, the optical fiber connector can be divided into as FC、SC、ST、LC、MTRJ、MPO、MU、SMA、FDDI、E2000、DIN4、D4 and so on.

Fiber pigtail



FC



ST



SC



LC



E2000



MTRJ



bundle fiber pigtail



zonary fiber pigtail



water-proof tail cable

specific

- 1、Link every type of connector
- 2、Adopt durable waterproof splices, easy and reliable for installation
- 3、Choose different cores according to need
- 4、General and waterproof, acceptable for field for all environment
- 5、Perfect tensile and earthing performance
- 6、Easy for installation, simple and reliable

Fiber Optic Passive Devices

performance index

(model) FC UPC APC
 (inserting loss) =0.2dB =0.2dB =0.3dB
 (echo loss) =45dB =50dB =60dB
 (service life >1000 times
 (working temperature) -25°C ~ +85°C
 (tensile intensity)>100N

application

1. Cable television network
2. Telecommunication network
3. Computer LAN
4. Connection of optical cable and light receiver

(Optical fiber adaptor)



FC/APC



FC/PC



SC/APC



SC/PC



SC/PC double core



SC/APC double core



ST/PC



LC/UPC double core



LC/UPC



LC/UPC (SC)



FC/PC(Double D)



FC/PC(D)



MU



E2000



MTRJ



ST/FC



FC/SC



ST/SC

description

Optical fiber adaptor is used for the connection and coupling between fiber active connectors. Choose proper type according to the splice of optical fiber active connector. Good agglomeration technic to ensure the best quality ,high intensity and stability.

application

Optical fiber communication network, data transmission, test equipments, LAN, Cable CATV.

classification

It can be divided into different types such as FC、SC、ST、LC、MTRJ、MPO、MU、SMA、DDI、DIN4、D4、E2000

Fiber Optic Passive Devices

Attenuator



FC/PC adjustable



SC/PC

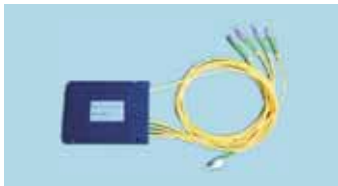


LC/PC



SC/PC fixed

Fiber splitter



description

The separation and the assemble of the optical signal are realized by fusion and elongation by fiber instruction, used for the splitting and two-way work of the communication system and cable television. It has perfect optical property and high reliability with low loss, good directivity, good optical wave flatness, good stability. Can be used in various disgusting condition, several packing form for your choice

application

Ftth, PON, fiber CATV, optical fiber communication system, optical fiber testing instrument, optical transducer LAN.

Accessories



Splice tray-single fiber 12core



Splice tray-single fiber 16 core



Splice tray-ribbon fiber 72 core



Splice tray-single fiber 12core



Splice tray-single fiber 24core



Splice tray-single fiber 24core



Heat shrinkable tube



sealing tape



optical fiber protective sleeve



Fiber storage trays



retainer



patch cord minder loop



Patch cord minder device



patch cord minder card



flange blocking frame



Fiber optical poke protector