

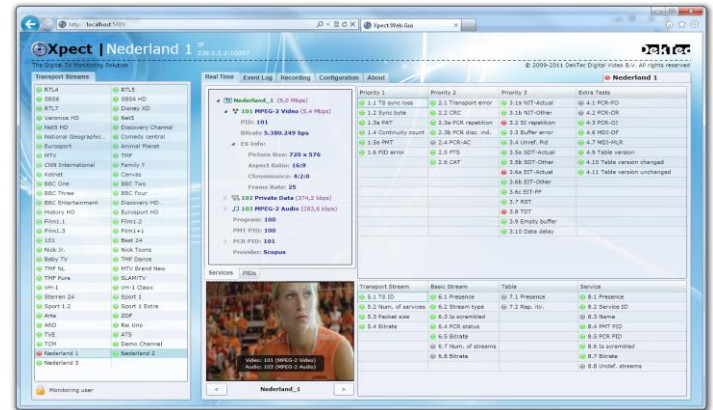


24/7 Transport-Stream Monitoring Software

- ❑ Full TR 101 290 priority 1, 2 & 3 tests
- ❑ User-defined template matching
- ❑ Long-term logging of stream statistics

FEATURES

- Simultaneous monitoring of multiple Transport Streams
- TR 101 290 conformance testing:
 - Priority 1, 2 & 3 (with buffer analysis)
 - PCR AC, FO, DR and OJ
 - MGB bitrate measurement
- Template matching: checks properties of TS, services, service components and tables
- Capturing of monitored Transport Stream to a file with pre- and post-trigger buffers; client initiated or triggered by a violation
- Maintains detailed statistical information:
 - Minimum/maximum/average bitrate
 - PCR statistics: AC, FO, DR and OJ
 - Delay Factor and Packet Loss (MDI)
- Database stores events (positive and negative) for each monitored stream
- UDP notifications per logged event
- SOAP and SNMP interface for remote control and automated access to captured TS files, statistics and error-event database
- Web interface for overall status indication, live video and audio decoding, remote configuration and access to event log



- Easy integration with 3rd-party NMS
- Includes configuration tool for easy creation of TR 101 290 and template-matching profiles
- Forwarding of any monitored Transport Stream over IP for remote real-time analysis or viewing (if using DTA-160)

APPLICATIONS

- 24/7 network supervision
- Automated equipment test and validation
- QoS maintenance: early visibility of faults
- SLA monitoring

SUPPORTED INPUT ADAPTERS

Signal Type	Supported Adapters
DVB-ASI	DTA-145, DTA-160, DTA-2160, DTA-2144, DTA-2145, DTU-225*, DTU-245*
DVB-S/S2	DTA-2137
DVB-T	DTA-2135
QAM	DTA-2136, DTA-2139
TS-over-IP	DTA-160, DTA-2160

* For evaluation and demos, not recommended for operational use

RELATED PRODUCTS

Type	Description
DTC-320	StreamXpert Transport Stream analyser for interactive usage

KEY ATTRIBUTES

Parameter	Value
Max. #TS for simultaneous monitoring*	20x MPTS @ 75Mbps per MPTS 50x MPTS @ 30Mbps per MPTS 250x SPTS @ 6Mbps per SPTS
Platform	64-bit Win XP/2k3/Vista/2k8/7

* Requires sufficiently powerful CPU and adequate memory

ORDERING INFORMATION

Type	Description
DTC-720-nPT	Xpect monitoring, <i>n</i> points: ¼ point for each radio SPTS; ½ point for each TV SPTS; 4 points for each MPTS.