



## Transport-Stream Analyser Software

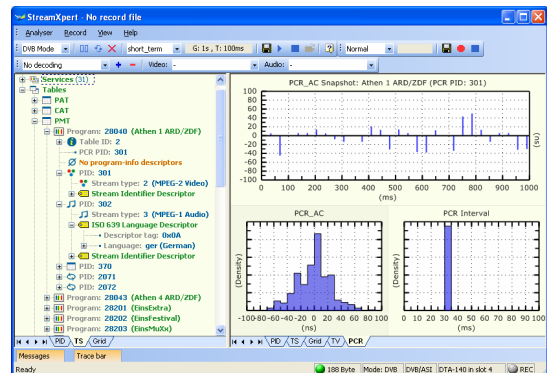
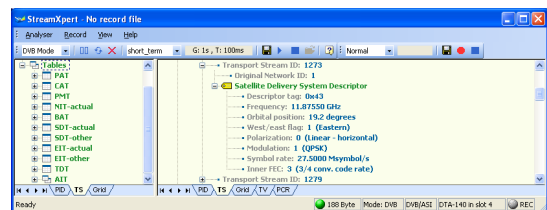
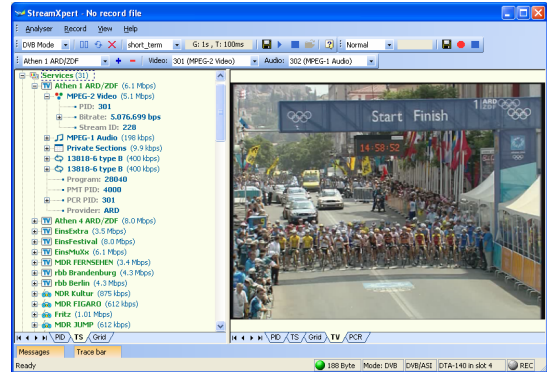
- Full Decoding of DVB/SI and ATSC/PSIP
- Template-Driven TR 101 290 Monitoring
- SD/HD Live Decoding, PCR analysis

### FEATURES

- Real-time analysis, monitoring and recording of MPEG-2 transport streams
- Provides detailed statistics on the PIDs, services and tables found in the Transport-Stream
- Deep decoding of PSI, DVB SI and ATSC PSIP tables and descriptors
- User-definable templates for configuring TR 101 290 monitoring
- Integrated SD/HD video and audio decoder with support for MPEG-2/MPEG-4/H.264 video streams and AC3 audio
- The worlds most cost-effective and user-friendly MPEG-2 Transport-Stream Analyser available
- Combine the *StreamXpert™*, a DTU-225 and a notebook to create a truly portable MPEG-2 Transport-Stream Analyser

### APPLICATIONS

- Validation and debugging of equipment with an MPEG-2 output, e.g. multiplexers
- Quality monitoring of MPEG-2 transport streams in studios, head ends, etc.



### KEY ATTRIBUTES

Parameter	Value
Input Rate	0...214 Mbit/s*

\* DVB-ASI with DTA-120, DTA-124, DTA-140 or DTU-225  
DVB-SPI with DTA-122: ≤108 Mbit/s (max. DVB/SPI rate)

### MINIMUM PC REQUIREMENTS

Platform	Windows-2000 / XP / 2003
Processor	PIII 1 GHz* (without live decoding) P4@1.7 Ghz* (SD-decoding) P4@3.0 Ghz* (HD-decoding)
RAM	256 MB
Disk (recording)	7200 rpm (rate ≤ 120 Mbit/s) 15000 rpm (rate > 120 Mbit/s)

\* Or equivalent AMD processor

### SUPPORTED INPUT ADAPTERS

Type	Description
DTA-120, DTA-122, DTA-124, DTA-140	DVB-ASI and DVB-SPI input adapters (PCI)
DTA-160	DVB/IP Gateway (PCI)
DTU-225, DTU-245	ASI adapters (USB-2)
DTU-234	8-VSB/QAM input (USB-2)

### ORDERING INFORMATION

Type	Description
DTC-320	StreamXpert MPEG-2 Analyser

Please refer to [www.dektec.com](http://www.dektec.com) for the latest pricing and a list of distributors and resellers.