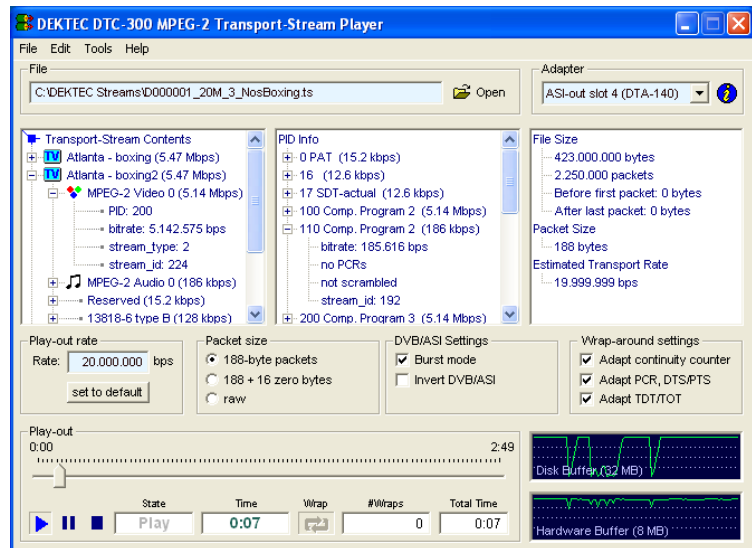


Transport-Stream/SDI Playout Software

- Integrated (P)SI viewer, looping
- Remote control option
- Selective error injection

FEATURES

- Integrate yourself a low-cost, high-performance stream player using a standard- or industrial PC, a DekTec output adapter and the *StreamXpress* playout software
- Integrated (P)SI viewer
- Control of modulation parameters
- Optional channel modeling of RF output signal
- Integrated ISDB-T hierarchical multiplexer
- Supports DTA-Plus RF attenuator
- Play-out at a higher rate by null-packet stuffing with PCR correction
- Endless play with optional automatic correction of continuity-counter and PCR/PTS/DTS fields
- Automatic computation of transport rate
- Reproducible injection of errors in the transport stream with adjustable error rate
- SOAP-based remote control option



APPLICATIONS

- Universal MPEG-2 stream generator for feeding set-top boxes, digital-video processing equipment, etc.
- Demoiing your MPEG-2 equipment
- Laboratory MPEG-2 test-signal generator

SUPPORTED OUTPUT ADAPTERS

Signal Type	Supported Adapters
DVB-ASI	DTA-105, DTA-160, DTE-3100
DVB-SPI	DTA-102
ASI/SDI	DTA-145, DTA-545, DTA-2144, DTA-2145, DTU-205, DTU-245
Modulators	DTA-107S2, DTA-110T, DTA-112, DTA-115, DTA-Plus, DTA-116, DTA-117
TSoIP	DTA-160

PC REQUIREMENTS

Platform	Windows XP/2k3/Vista, 512MB
Processor	PIII* (ASI) .. Core 2* (DVB-T2)

* Or equivalent AMD processor

RELATED PRODUCTS

Type	Description
DTC-302-RC	Remote-control option
DTC-305-CM	Channel-modelling option for modulators
DTC-320	<i>StreamXpert</i> TS analyser software
DTC-330	<i>DfTV</i> TS television software
DTC-335	<i>SdEye</i> SDI analysis software

ORDERING INFORMATION

Type	Description
DTC-300	<i>StreamXpress</i> playout software

Please refer to www.dektec.com for the latest pricing and a list of distributors and resellers.